

MINING & EARTHMOVER

MAGNA MA02

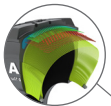
E3+/L3+

The Magna MA02 is ideally suited to higher speed applications operating on a wide variety of surfaces. The E3+/L3+ tyre is designed for use on wheel loaders, articulated dump trucks, scrapers, graders and dozers.

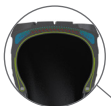
Outstanding traction in all off-road applications with thick under-tread for improved puncture resistance. The special tread compound used for this tyre is wear and cut-resistant to increase the productivity and operating costs.



Improved traction and performance through non-directional E3+/L3+ tread.



All steel radial construction. Improved protector plies optimize load performance and operator comfort.



New improved technology of the high-tech casing reduces heat build up inside the tyre.



Tyre size	Pattern	Load symbol	Tra code	Max. speed (km/h)	Load/speed index	Single max. load/pressure	Rim	Overall diameter (mm)	Section width (mm)	Tread depth (mm)
23.5R25	MA02	**	E3+	50	185B	9250 kg/5.0 bar	19.50/2.5	1615	598	41
			L3+	10	201A2	14500 kg/6.5 bar				
26.5R25	MA02	**	E3+	50	193B	11500 kg/5.0 bar	22.00/3.0	1754	695	41
			L3+	10	209A2	18450 kg/6.5 bar				
29.5R25	MA02	**	E3+	50	200B	13950 kg/5.0 bar	25.00/3.5	1880	737	44
			L3+	10	216A2	22350 kg/6.5 bar				