

MINING & EARTHMOVER

MAGNA MA02F

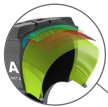
E3+

The Magna MA02F is a durable and aggressive E3+ tyre for medium-powered scrapers requiring high traction force during the most demanding jobs.

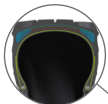
The special rock design and reinforced sidewalls offers excellent protection against cutting and abrasion on all terrain.



Improved traction and performance through non-directional E3+ tread pattern



All steel radial construction. Improved protector plies optimize load performance and operator comfort.



New improved technology of the high-tech casing reduces heat build-up inside the tyre.



Tyre size	Pattern	Load symbol	Tra code	Max. speed (km/h)	Load/speed index	Single max. load/pressure	Rim	Overall diameter (mm)	Section width (mm)	Tread depth (mm)	TKPH
29.5R29	MA02F	**	E3+	50	202B	15000 kg/5.25 bar	25.00/3.5	1990	770	50	348
33.25R29	MA02F	**	E3+	50	209B	18500 kg/5.25 bar	27.00/3.5	2065	860	45	429
37.25R35	MA02F	**	E3+	50	218B	23600 kg/5.25 bar	31.00/4.0	2360	940	47	545