

MINING & EARTHMOVER

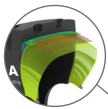
MAGNA MA05 L5

The Magna MA05 is a L5-loader tyre specially designed to meet the demanding requirements in surface mines, quarries, scrap yards and underground mine transport.

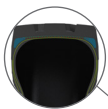
Exceptional robustness and reliability, with an ideal balance of adhesion and traction. The crown and sidewall are reinforced to prevent damage and to extend tyre life in severe operating conditions.



The extra deep L5 rock tread and reinforced shoulders and sidewalls prevent damage in severe operating conditions.



All steel radial construction. Improved protector plies optimize load performance and operator comfort.



New improved technology of the high-tech casing reduces heat build up inside the tyre.



Tyre size	Pattern	Load symbol	Tra code	Max. speed (km/h)	Load/speed index	Single max. load/pressure	Rim	Overall diameter (mm)	Section width (mm)	Tread depth (mm)
17.5R25	MA05	**	L5	6	182A2	8500 kg/6.5 bar	14.00/1.5	1397	483	65
26.5R25	MA05	**	L5	10	209A2	18500 kg/6.5 bar	22.00/3.0	1803	686	91
29.5R25	MA05	**	L5	10	216A2	22400 kg/6.5 bar	25.00/3.5	1905	787	100