

MINING & EARTHMOVER

MAGNA MA08

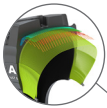
L4/L5

The Magna MA08 is loader tyre with exceptional traction due to its massive tread blocks and aggressive, open design.

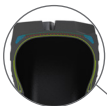
The deep tread of the Magna MA08, combined with the protected sidewall, provides an outstanding level of cut- and damage-resistance.



The aggressive L4/L5 open tread pattern provides grip and traction.



All steel radial construction. Improved protector plies optimize load performance and operator comfort.



New improved technology of the high-tech casing reduces heat build up inside the tyre.



Tyre size	Pattern	Load symbol	Tra code	Max. speed (km/h)	Load/speed index	Single max. load/pressure	Rim	Overall diameter (mm)	Section width (mm)	Tread depth (mm)
20.5R25	MA08	**	L5	10	193A2	11500 kg/6.5 bar	17.00/2.0	1548	521	72
23.5R25	MA08	**	L5	10	201A2	14500 kg/6.5 bar	19.50/2.5	1662	592	78
26.5R25	MA08	**	L5	10	209A2	18500 kg/6.5 bar	22.00/3.0	1800	5665	87
29.5R25	MA08	**	L5	10	216A2	22400 kg/6.5 bar	25.00/3.5	1900	720	95
29.5R29	MA08	**	L5	10	218A2	23600 kg/6.5 bar	25.00/3.5	1960	750	95
35/65R33	MA08	**	L4	10	224A2	28000 kg/6.5 bar	28.00/3.5	2075	880	63
35/65R33	MA08	**	L5	10	224A2	28000 kg/6.5 bar	28.00/3.5	2075	880	97