

MINING & EARTHMOVER

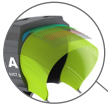
MAGNA MA09+ E4

The Magna MA09+ is a radial tyre specifically engineered for rigid dumpers and haul trucks in mining applications. The huge tread blocks helps improve the tyre's a better road-holding and cut- resistance

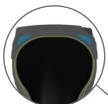
The wide horizontal groove improves heat dispersion and self-cleaning properties. The distinctive tread design provides outstanding traction, stability as well as good braking and cornering performance on rough and gravel terrains.



Deep E4 Tread pattern provides resistance to cutting, chipping and shock damage and enhances tyre life.



All steel radial construction. Improved protector plies optimize load performance and operator comfort.



New improved technology of the high-tech casing reduces heat build up inside the tyre.



Tyre size	Pattern	Load symbol	Tra code	Max. speed (km/h)	Load/speed index	Single max. load/pressure	Rim	Overall diameter (mm)	Section width (mm)	Tread depth (mm)	TKPH				
											A1	A2	ST	B2	B1
30.00R51	MA09+	**	E4	50	230B	33500 kg/ 6.5 bar	22.00/4.5	2878	845	75	456	536	588	643	744
36.00R51	MA09+	**	E4	50	241B	46250 kg/ 6.5 bar	26.00/5.0	3194	990	83	631	740	814	888	1028