

MINING & EARTHMOVER

MAGNA MA10+

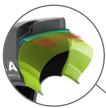
L5

The Magna MA10+ is an all steel radial tyre specially designed for loaders in extreme and rocky conditions including in some cases underground operations.

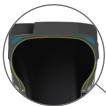
Impact and cut resistant thanks to the optimized compound, the reinforced protection ply and the tread depth. The shoulder groove creates an optimized design for traction and evacuation, with a smooth central pattern for adhesion and protection.



Extra deep L5 tread pattern for excellent traction in the most severe circumstances.



All steel radial construction. Improved protector plies optimize load performance and operator comfort.



New improved technology of the high-tech casing reduces heat build up inside the tyre.



Tyre size	Pattern	Load symbol	TRA	Max. speed (km/h)	Load/speed index	Single max. load/pressure	Rim	Overall diameter (mm)	Section width (mm)	Tread depth (mm)
20.5R25	MA10+	**	L5	10	193A2	11500 kg/6.5 bar	17.00/2.0	1550	520	70
23.5R25	MA10+	**	L5	10	201A2	14500 kg/6.5 bar	19.50/2.5	1676	595	76
26.5R25	MA10+	**	L5	10	209A2	18500 kg/6.5 bar	22.00/3.0	1800	675	86
29.5R25	MA10+	**	L5	10	216A2	22400 kg/6.5 bar	25.00/3.5	1920	750	96